

HYDRO TECH

BIB



FABRIC DESCRIPTION

- Out shell - BearWear Hydro Tech Royal Blue/Grey/Red with HD treatment, filmed on back
- Modacrylic/Cellulose/Polyarylate/Polyamide/As
- Inner layer - 12oz black fleece
- 100% Cotton

GARMENT CONSTRUCTION

- Aramid high tenacity FR thread
- All metal thermally protected from the skin
- Bar-tacked at all stress points
- Two-way heavy duty #5 brass zipper on aramid tape
- 1 zipper at CF, 2 zippers on leg, 1.5" from hem
- Backside 1" elastic band at waist
- Elasticized shoulder straps with adjustable buckles
- Seam sealed

POCKETS

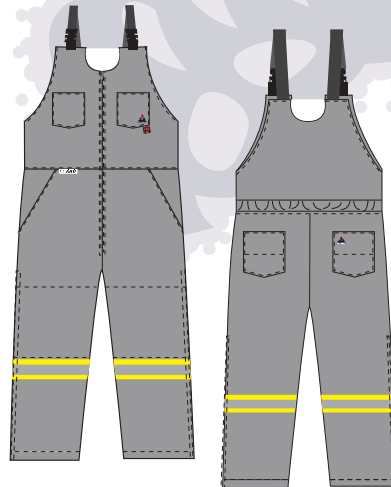
- 2 chest patch pockets
- 2 slanted pockets at waist
- 2 patch rear hip pockets

HIGH VISIBILITY TRIM

- 2" RT80 H7440 Reflective Tape, YSY
- Double stitching on tape
- Reflective tape around legs

PPE STANDARDS MET

- Protective flame retardant and arc flash suits described in this technical standard are used in noxious and hazardous environments must meet the following safety and visibility standards:
- CAT 4
- ATPV 54 cal/cm2 (electric arc flash rating)
- US Standards: NFPA 2112-2023 (Only flame resistance tested by SGS)
- ASTM F1868-17 Thermal Resistance CLO - 0.54
- AATCC TM127 Water Resistance (Hydrostatic Head) - 3000mm H2O
- AATCC TM35 Water Resistance (Rain Test) - 900mm head pressure, 2 minutes impact
- ASTM E96 Water Vapour Transmission - 5000g/24h/m²



**A NEW
ANIMAL**
FOR ATHLETES ON THE JOB

**WHITE BEAR
WORK WEAR**
whitebearworkwear.com

Bay 6, 1906-4th St., Nisku, AB • 780-955-3810 • sales@whitebearworkwear.com

HYDRO TECH

BIB



SIZES

Label size	XS	S	M	L	XL	2XL	3XL	4XL	5XL	Allowable Tolerance
Chest Finished	39	42	45	48	52	56	60	64	68	±3/4
Waist Finished	30	33	36	39	43	47	51	55	59	±3/4
Seat Finished	42	45	48	51	55	59	63	67	71	±1/2
Thigh Finished	26 1/2	28	29 1/2	31	33	35	37	39	40	±1/2
Bottom Finished	20	20 1/2	21	21 1/2	22 1/2	23 1/2	24 1/2	25 1/2	26 1/2	±1/2
Leg Inseam Finished	31	31	31	31	31	31	31	31	31	±1
Front Rise Finished	24 1/2	25	25 1/2	26	26 1/2	27	27 1/2	28	28 1/2	±3/4
Back Rise Finished	29	29 1/2	30	30 1/2	31 1/4	32	32 3/4	33 1/2	34 1/4	±3/4
Front Zipper	18 1/2	19	19 1/2	20	20 1/2	21	21 1/2	22	22 1/2	0
Leg Zipper	29" for all sizes									0
Elastic Striping Length	35cm*2+10cm*2									0



**WHITE BEAR
WORK WEAR**
whitebearworkwear.com