



White Bear
Work Wear

REFLECTIVE FR INSULATED BIB

P R E M I U M

W O R K W E A R



w w w . w h i t e b e a r w o r k w e a r . c o m


Fabric Description

- 9oz royal blue/red/grey/black/orange FR Twill Weave FireZero®
- 90% Cotton/10% Nylon
- 13oz quilted enhanced

Garment Construction

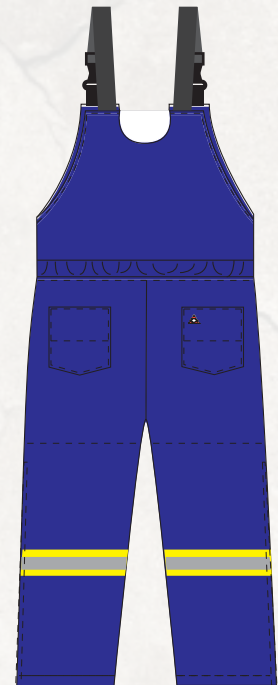
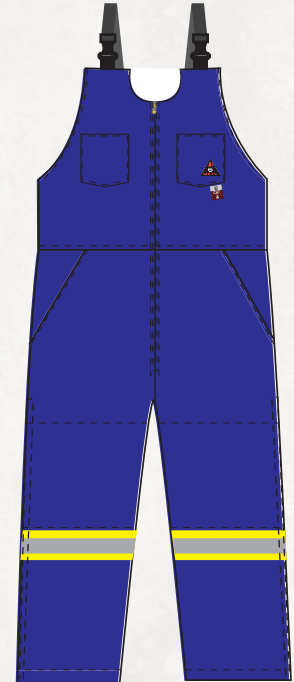
- Aramid high tenacity FR thread
- All metal thermally protected from the skin
- Bar-tacked at all stress points
- Two-way heavy duty #8 brass zipper on aramid tape
- 1 zipper at CF, 2 zippers on leg, 1.5" from hem
- Backside 1.5" elastic band at waist
- Elasticized shoulder straps with adjustable buckles
- 2 chest patch pockets
- 2 slanted pockets at waist
- 2 patch rear hip pockets

PPE Standards Meet

- Protective flame retardant and arc flash suits described in this technical standard are used in noxious and hazardous environments must meet the following safety and visibility standards:
- CAT 4
- ATPV 54.4cal/cm2 (electric arc flash rating)
- US Standards: NFPA 70E, ASTM F1506, OSHA 29 CFR 1910.269, Out layer material is UL Recognized per NFPA 2112-2018  (UL model CN901009)
- CAN Standards: CAN/CGSB 155.20, CAN/CGSB 155.22
- EUR Standards: EN ISO11611, EN ISO11612, EN ISO14116
- OEKO-TEX Standard 100

High Visibility Trim

- 2" CSR 1303 NM2Y reflective tape, YSY
- Double stitching on the tape
- Reflective tapes around legs



We'll
COVERALL
Your Needs!

Bay 6, 1906-4th St., Nisku, AB
780-955-3810 • sales@whitebearworkwear.com



White Bear
Work Wear

REFLECTIVE FR INSULATED BIB

P R E M I U M

W O R K W E A R



w w w . w h i t e b e a r w o r k w e a r . c o m

SIZES	S	M	L	XL	2XL	3XL	4XL	5XL	6XL	7XL	Tol +/-
MEASUREMENTS	INCHES	INCHES	INCHES	INCHES	INCHES	INCHES	INCHES	INCHES	INCHES	INCHES	
A) 1/2 CHEST	22 1/4	24 1/4	26 1/4	28 1/4	30 1/4	32 1/4	34 1/4	36 1/4	38 1/4	40 1/4	1/2"
B) 1/2 WAIST (EXTENDED)	24	26	28	30	32	34	36	38	40	42	1/2"
B) 1/2 WAIST (RELAXED)	17	19	21	23	25	27	29	31	33	35	1/2"
C) 1/2 HIP	24	26	28	30	32	34	36	38	40	42	1/2"
D) NECKLINE	6 5/8	6 11/16	6 3/4	6 13/16	6 7/8	6 15/16	7	7 1/16	7 1/8	7 3/16	1/4"
E) FRONT RISE	21 1/4	22 1/4	23 1/4	24 1/4	25 1/4	26 1/4	27 1/4	28 1/4	29 1/4	30 1/4	1/4"
F) BACK RISE	24 1/2	25 1/2	26 1/2	27 1/2	28 1/2	29 1/2	30 1/2	31 1/2	32 1/2	33 1/2	1/4"
G) INSEAM	28 5/8	28 5/8	28 5/8	28 5/8	28 5/8	28 5/8	28 5/8	28 5/8	28 5/8	28 5/8	1/4"
H) 1/2 KNEE	11 3/4	12 1/2	13 1/4	14	14 3/4	15 1/2	16 1/4	17	17 3/4	18 1/2	1/4"
I) 1/2 LEG OPENING	10 1/4	10 3/4	11 1/4	11 3/4	12 1/4	12 3/4	13 1/4	13 3/4	14 1/4	14 3/4	1/4"

-  2" stripe – 9 oz Royal Blue
-  2" stripe – 9 oz Red
-  2" stripe – 9 oz Grey
-  2" stripe – 9 oz Black
-  2" stripe – 9 oz Orange



We'll
COVERALL
Your Needs!

Bay 6, 1906-4th St., Nisku, AB
780-955-3810 • sales@whitebearworkwear.com