



White Bear
Work Wear

REFLECTIVE BIB

P R E M I U M

W O R K W E A R



w w w . w h i t e b e a r w o r k w e a r . c o m

Fabric Description

- 7oz FR Twill Weave Fabric FireZero®
- 90% Cotton / 10% Nylon


Garment Construction

- Aramid high tenacity FR thread
- All metal thermally protected from the skin
- Bar-tacked at all stress points
- Heavy duty #5 brass zipper on aramid tape
- Two-way 1 zipper at CF, one-way 2 12" zippers on leg
- Elasticized shoulder straps with adjustable buckles
- Velcro Leg Adjustment

Pockets

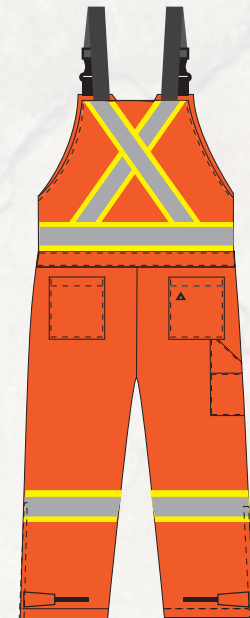
- 2 chest patch pockets, flap with velcro closure, pencil slot on left pocket
- 2 slanted pockets at waist
- 2 patch rear hip pockets
- 1 tool pocket on right leg

PPE Standards Meet

- CAT 2
- ATPV 9.2 cal/cm2 (electric arc flash rating)•
- NFPA 70E, ASTM F1506, CAN/CGSB 155.20, CAN/CGSB 155.22, OSHA 29 CFR1910.269, EN ISO11611, EN ISO11612, EN ISO14116
- The material is UL Recognized per NFPA 2112-2018 , file MH49121
- OEKO-TEX Standard 100

High Visibility Trim

- 4" 3M RT-81 reflective tape, Yellow/Silver/Yellow
- Double stitching on the tape
- Reflective tapes around waist and leg, striping "X" on back



We'll
COVERALL
Your Needs!

Bay 6, 1906-4th St., Nisku, AB
780-955-3810 • sales@whitebearworkwear.com



White Bear
Work Wear

REFLECTIVE BIB

P R E M I U M

W O R K W E A R



w w w . w h i t e b e a r w o r k w e a r . c o m

Sizes

Label size	S	M	L	XL	2XL	3XL
Chest Finished	43	46	49	53	57	61
Waist Finished	41	44	47	51	55	59
Seat Finished	45	48	51	55	59	63
Thigh Finished	28	29 1/2	31	33	35	37
Bottom Finished	20 1/2	21	21 1/2	22 1/2	23 1/2	24 1/2
Leg Inseam Finished	31	31	31	31	31	31
Front Rise Finished	25	25 1/2	26	26 1/2	27	27 1/2
Back Rise Finished	32 1/4	32 3/4	33 1/4	34	34 3/4	35 1/2
Front Zipper	19	19 1/2	20	20 1/2	21	21 1/2
Leg Zipper	12	12	12	12	12	12
Elastic Striping Length	40cm*2	40cm*2	40cm*2	40cm*2	40cm*2	40cm*2



4" stripe – 7 oz Orange



We'll
COVERALL
Your Needs!

Bay 6, 1906-4th St., Nisku, AB
780-955-3810 • sales@whitebearworkwear.com